

DCDAL Series DALI Controllers

Introduction

DALIcontrol DCDAL Series controllers provide advanced control features to create a fully functional lighting control system. All DCDAL Series controllers are built to the Digital Addressable Lighting Interface (DALI) International Standard and require one DALI address.

Advanced DALI Controllers

DCDALIO-0402

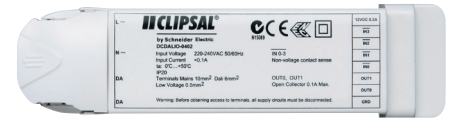
Advanced Input Module.

The DCDALIO-0402 advanced input module is designed for DALI applications that require a level of data acquisition. The module can be used for applications such as traffic counting and car park guidance systems in shopping centres. Used in conjunction with BM-DALI controller/gateways the DCDALIO-0402 module enables lighting and signage to be controlled based on the status of a number of field inputs.

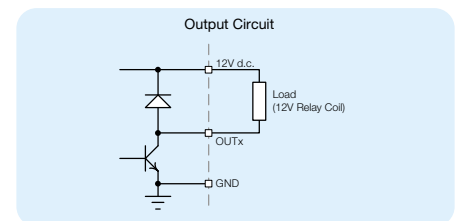
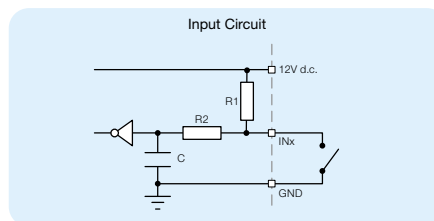
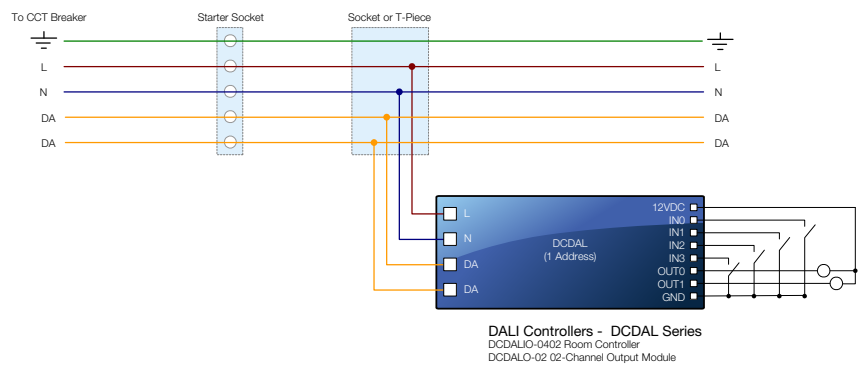
DCDALO-02

Advanced 2-channel Output Module.

The DCDALIO-02 DALIcontrol advanced output module is designed for DALI applications that control fixed output lighting circuits. The module includes two-outputs which can be used to drive contactors or relays that control a load.



DCDALIO-0402



Clipsal Australia Pty Ltd

A member of Schneider Electric



Head Office

33-37 Port Wakefield Road,
Gepps Cross, South Australia 5094

Postal Address

PO Box 132
Enfield Plaza, South Australia 5085

Website www.dalicontrol.com

Contact your local Schneider Electric office for sales and technical support. www.clipsal.com/trade/contact_us

You can find this data sheet and many others online in PDF format at:
www.dalicontrol.com



Clipsal Australia Pty Ltd reserves the right to change specifications, modify designs and discontinue items without incurring obligation and whilst every effort is made to ensure that descriptions, specifications and other information in this catalogue are correct, no warranty is given in respect thereof and the company shall not be liable for any error therein.

© Clipsal Australia Pty Ltd

This material is copyright under Australian and international laws. Except as permitted under the relevant law, no part of this work may be reproduced by any process without prior written permission of and acknowledgement to Clipsal Australia Pty Ltd.