

The advertisement features a dark brown background with a large, semi-transparent clock face. The clock face has numbers 4, 5, and 6 visible, and a hand pointing towards 4. Overlaid on the clock are several circular vignettes showing various electrical components: a terminal block with gold-colored terminals, a transformer with a mesh core, a cylindrical component, and various electrical connectors and components. The text 'CLIPSAL' is prominently displayed in the top right, with 'ELECTRICAL ACCESSORIES' below it. The phrase 'Timeless Heritage' is written in a large, elegant script font across the middle and bottom of the image. The website 'clipsal.com' is in a white box at the bottom right.

**CLIPSAL**<sup>®</sup>  
ELECTRICAL ACCESSORIES

*Timeless Heritage*  
TIMELESS  
*Heritage*

[clipsal.com](http://clipsal.com)





# Contents

*Introduction* ..... 5

*Polished Brass Heritage* ..... 6-9

*The sheer elegance and sophistication of Polished Brass*

*Antique Brass Heritage* ..... 10-13

*The old world charm of Antique Brass*

*Florentine Bronze Heritage* ..... 14-17

*The rustic beauty of Florentine Bronze*

*Chrome Heritage* ..... 18-21

*Go retro! Recreate the art deco look with classic Chrome*

*Timber Heritage* ..... 22-23

*The texture of timber provides the perfect finish*





Coonara





# A new generation of Heritage

## Give Your Home the Timeless Touch of Heritage

*The elegance, charm and timeless appeal of the 1920s have resulted in generations of homeowners retaining the character of this era while painstakingly restoring older homes. The '20s have also inspired many people to recreate the look of this period when building new homes in the Federation style.*

*The Heritage Range of switches, power outlets and accessories from Clipsal superbly captures the look of the 1920s, while meeting the safety standards and technology requirements of today.*

*No other range of 1920s inspired electrical accessories can match the extensive choice of authentically styled products in the Clipsal Heritage Range.*

*In addition to our exquisite Polished Brass covers, we now offer the old world charm of Antique Brass, rustic beauty of Florentine Bronze, and for those who want to recreate the art deco era of the '20s and '30s there's the brilliance of classic Chrome.*

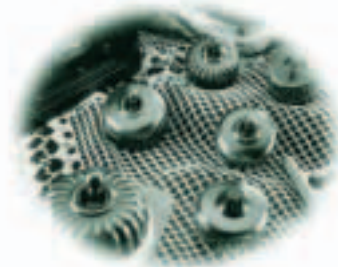
*Add to these genuine metal covers, a stylish smooth or ornate ribbed finish, porcelain bases, in white or black, and mounting blocks, for the complete Heritage look.*

*The Heritage range features switches, (including ceiling pull cord, intermediate, double pole and bell press), sockets, dimmers and fan speed controllers.*

*Heritage products are suitable for use with the Clipsal Minder Home Automation System, Starserve Network System and C-Bus Energy Management System. This means that you can combine the look of yesteryear with the innovative technology that each of these integrated systems provides.*

*A Blank Unit is also available to accept a wide range of Clipsal 30 Series Mechanisms, including fax and computer outlets.*

*Whether they're switching on the globes in your antique pendant light fitting or putting the power into your TV, fax machine or computer, you can add that authentic finishing touch to your renovation or reproduction style home with the Timeless Heritage Range of switches, sockets and accessories from Clipsal.*







EB  
W III  
CTIC  
ME - SCHOL  
Self-Pronouncing  
onyms - Antonyms





## Polished Brass Heritage

**P**olished Brass was the original metal cover in the Heritage Range, and because it was designed as an authentic match to the switches and sockets of the 1920s, is the perfect choice for those who want to recreate the traditional look throughout their home.

### Switches & Accessories with Smooth Polished Brass Covers and Porcelain Bases

Available with White (WE) or Black (BK) porcelain bases. When ordering, please specify porcelain base colour. eg 1920/30 with white porcelain base becomes 1920/30,WE. 58mm diameter.

Cat. No.	Volts/Amps	Description	Key
1920/30	250V 10A	Polished Brass Toggle Switch	L
1920/30P	250V 10A	Polished Brass Cover and Brown Plastic Toggle Switch	not shown
1920/30MI	250V 10A	Polished Brass Intermediate Switch	L
1920/30MD	250V 10A	Polished Brass Double Pole Switch	L
1920/30MBPR	250V 10A	Polished Brass Bell Press with Return Spring Action	L
1920/31		Polished Brass Blank Unit. Suits Clipsal Standard Switch Modules.	E
1920/400	250V 400V.A	Polished Brass Incandescent Dimmer	K
1920/400LV	250V 400V.A	Polished Brass Low Voltage Dimmer	K
1920/400F	250V 400V.A	Fan Speed Controller with Polished Brass Cover	K



*The sheer elegance and sophistication of Polished Brass*

### Switches & Accessories with Ribbed Polished Brass Covers and Porcelain Bases

Available with White (WE) or Black (BK) porcelain bases. When ordering, please specify porcelain base colour. eg 1920R30 with white porcelain base becomes 1920R30,WE. 58mm diameter.

Cat. No.	Volts/Amps	Description	Key
1920R30	250V 10A	Polished Brass Toggle Switch	F
1920R30P	250V 10A	Polished Brass Cover and Brown Plastic Toggle Switch	not shown
1920R30MI	250V 10A	Polished Brass Intermediate Switch	F
1920R30MD	250V 10A	Polished Brass Double Pole Switch	F
1920R30MBPR	250V 10A	Polished Brass Bell Press with Spring Return Action	F
1920R400	250V 400V.A	Polished Brass Incandescent Dimmer	I
1920R400LV	250V 400V.A	Polished Brass Low Voltage Dimmer	I
1920R400F	250V 400V.A	Fan Speed Controller with Polished Brass Cover	I



*The sheer elegance  
and sophistication of Polished Brass*







### Switches & Accessories with Smooth Polished Brass Covers (Shallow Type) 53mm diameter.

Cat. No.	Volts/Amps	Description	Key
1920S30,BS	250V 10A	Polished Brass Switch	D
1920S30MI,BS	250V 10A	Polished Brass Intermediate Switch	D
1920S30MD,BS	250V 10A	Polished Brass Double Pole Switch	D
1920S30MBPR,BS	250V 10A	Polished Brass Bell Press with Spring Return Action	D
1920S400,BS	250V 400V.A	Polished Brass Incandescent Dimmer	not shown
1920S400LV,BS	250V 400V.A	Polished Brass Low Voltage Dimmer	not shown
1920S400F,BS	250V 400V.A	Fan Speed Controller with Polished Brass Cover	not shown
1920STV75,BS		Polished Brass TV Socket (including mechanism)	G

### Switches & Accessories with Ribbed Polished Brass Covers (Shallow Type) 53mm diameter.

Cat. No.	Volts/Amps	Description	Key
1920SR30,BS	250V 10A	Polished Brass Switch	not shown
1920SR30MI,BS	250V 10A	Polished Brass Intermediate Switch	not shown
1920SR30MD,BS	250V 10A	Polished Brass Double Pole Switch	not shown
1920SR400,BS	250V 400V.A	Polished Brass Incandescent Dimmer	J
1920SR400LV,BS	250V 400V.A	Polished Brass Low Voltage Dimmer	J
1920SR400F,BS	250V 400V.A	Fan Speed Controller with Polished Brass Cover	J
1920SR30MBPR,BS	250V 10A	Polished Brass Bell Press with Spring Return Action	not shown
1920SRTV75,BS		Polished Brass TV Socket (including mechanism)	A

### 3 Pin Sockets with Polished Brass Covers 53mm diameter.

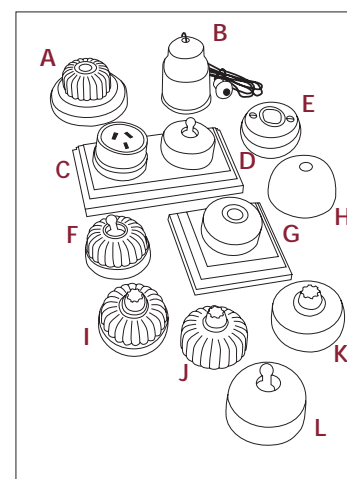
Cat. No.	Volts/Amps	Description	Key
1920/412,BR	250V 10A	Brown 3 Pin Socket	C
1920/412,WE	250V 10A	White 3 Pin Socket	not shown

### Ceiling Switch with Polished Brass Cover 54mm diameter.

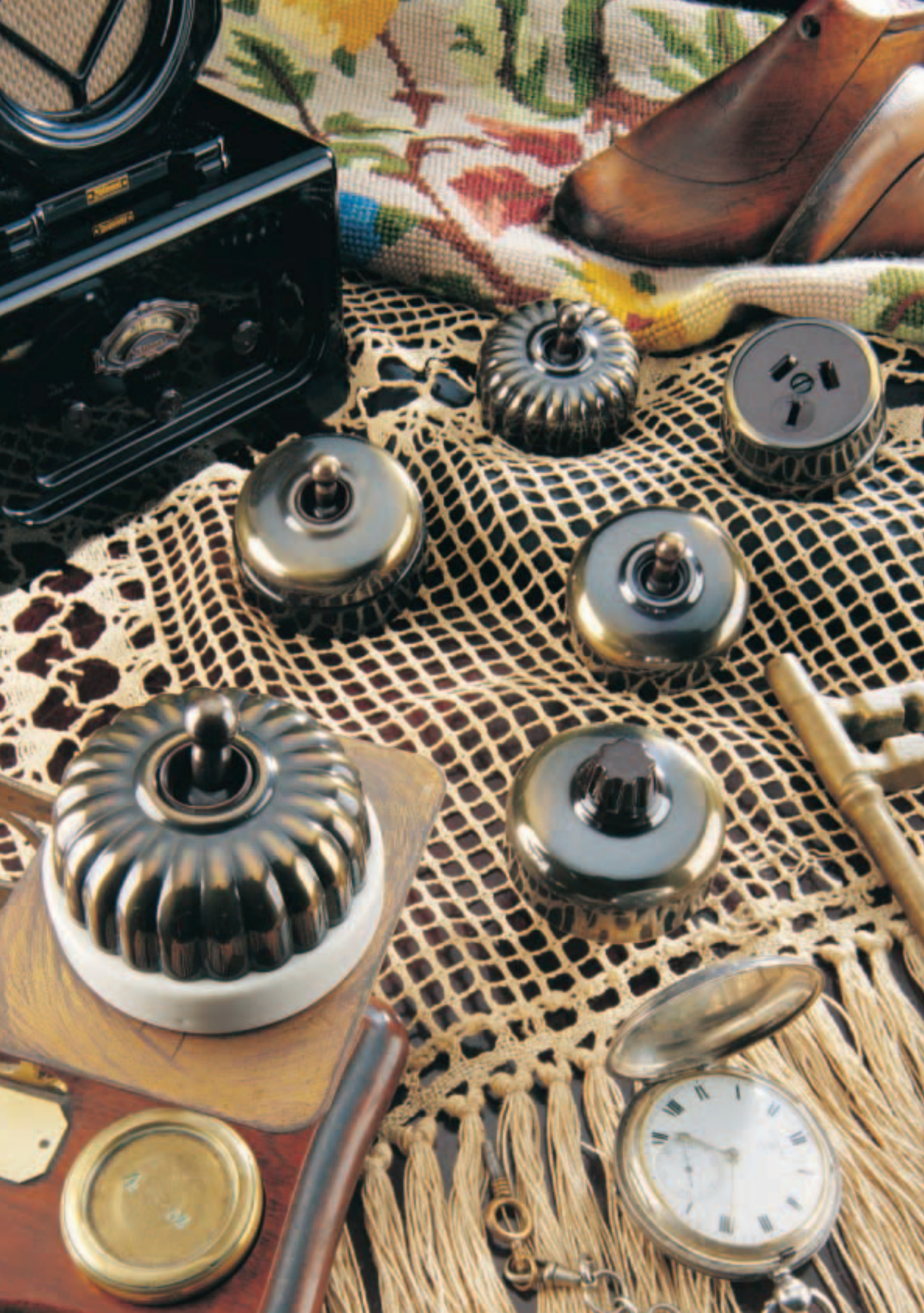
Cat. No.	Volts/Amps	Description	Key
1920/343,BS	250V 10A	Two Way Brass Ceiling Switch with 1.8m Brown Pull Cord	B

### Ceiling Rose 65mm diameter.

Cat. No.	Volts/Amps	Description	Key
1920/93,BS	500V 15A	Ceiling Rose with Brass Plate Finish	H











## Antique Brass Heritage

**T**hese 'antiques' are sure to become some of your favourite collectables!

With a quality old world finish that is unique to the Clipsal Heritage Range, Antique Brass covers will give your home a lovely sense of warmth and style.

### Switches & Accessories with Smooth Antique Brass Covers and Porcelain Bases

Available with White (WE) or Black (BK) porcelain bases. When ordering, please specify porcelain base colour. eg 1920A30 with white porcelain base becomes 1920A30,WE. 58mm diameter.



*The old world charm  
of Antique Brass*

Cat. No.	Volts/Amps	Description	Key
1920A30	250V 10A	Antique Brass Toggle Switch	H
1920A30MI	250V 10A	Antique Brass Intermediate Switch	H
1920A30MD	250V 10A	Antique Brass Double Pole Switch	H
1920A30MBPR	250V 10A	Antique Brass Bell Press with Spring Return Action	H
1920A31		Antique Brass Blank Unit. Suits Clipsal Standard Switch Modules.	I
1920A400	250V 400V.A	Antique Brass Incandescent Dimmer	M
1920A400LV	250V 400V.A	Antique Brass Low Voltage Dimmer	M
1920A400F	250V 400V.A	Fan Speed Controller with Antique Brass Cover	M

### Switches & Accessories with Ribbed Antique Brass Covers and Porcelain Bases

Available with White (WE) or Black (BK) Porcelain Bases. When ordering, please specify porcelain base colour. eg 1920AR30 with white porcelain base becomes 1920AR30,WE. 58mm diameter.

Cat. No.	Volts/Amps	Description	Key
1920AR30	250V 10A	Antique Brass Toggle Switch	C
1920AR30MI	250V 10A	Antique Brass Intermediate Switch	C
1920AR30MD	250V 10A	Antique Brass Double Pole Switch	C
1920AR30MBPR	250V 10A	Antique Brass Bell Press with Spring Return Action	C
1920AR400	250V 400V.A	Antique Brass Incandescent Dimmer	L
1920AR400LV	250V 400V.A	Antique Brass Low Voltage Dimmer	L
1920AR400F	250V 400V.A	Fan Speed Controller with Antique Brass Cover	L



*The old world charm  
of Antique Brass*







**Switches & Accessories with  
Antique Brass Covers (Shallow Type)** 53mm diameter.

Cat. No.	Volts/Amps	Description	Key
1920S30,AB	250V 10A	Antique Brass Toggle Switch	E
1920S30MI,AB	250V 10A	Antique Brass Intermediate Switch	E
1920S30MD,AB	250V 10A	Antique Brass Double Pole Switch	E
1920S30MBPR,AB	250V 10A	Antique Brass Bell Press with Spring Return Action	E
1920S400,AB	250V 400V.A	Antique Brass Incandescent Dimmer	J
1920S400LV,AB	250V 400V.A	Antique Brass Low Voltage Dimmer	J
1920S400F,AB	250V 400V.A	Fan Speed Controller with Antique Brass Cover	J
1920STV75,AB		Antique Brass TV Socket (including mechanism)	G

**Switches & Accessories with  
Antique Brass Covers (Shallow Type)** 53mm diameter.

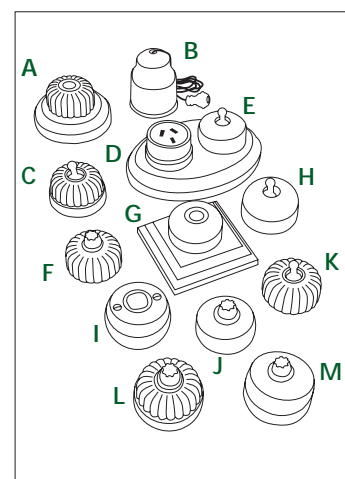
Cat. No.	Volts/Amps	Description	Key
1920SR30,AB	250V 10A	Antique Brass Toggle Switch	K
1920SR30MI,AB	250V 10A	Antique Brass Intermediate Switch	K
1920SR30MD,AB	250V 10A	Antique Brass Double Pole Switch	K
1920SR30MBPR,AB	250V 10A	Antique Brass Bell Press with Spring Return Action	K
1920SR400,AB	250V 400V.A	Antique Brass Incandescent Dimmer	F
1920SR400LV,AB	250V 400V.A	Antique Brass Low Voltage Dimmer	F
1920SR400F,AB	250V 400V.A	Fan Speed Controller with Antique Brass Cover	F
1920SRTV75,AB		Antique Brass TV Socket (including mechanism)	A

**3 Pin Sockets with Antique Brass Covers** 53mm diameter.

Cat. No.	Volts/Amps	Description	Key
1920A412,BR	250V 10A	Brown 3 Pin Socket	D
1920A412,WE	250V 10A	White 3 Pin Socket	not shown

**Ceiling Switch with Antique Brass Cover** 54mm diameter.

Cat. No.	Volts/Amps	Description	Key
1920/343,AB	250V 10A	Two Way Antique Brass Ceiling Switch with 1.8m Brown Pull Cord	B









## Florentine Bronze Heritage

*B*oasting Michelangelo as its most famous son, Florence is renowned as Italy's capital of art and architecture.

*Inspired by this renaissance city, we've applied the same rustic beauty to a range of Heritage covers and given it the name Florentine Bronze.*

### Switches & Accessories with Smooth Florentine Bronze Covers and Porcelain Bases

Available with White (WE) or Black (BK) porcelain bases. When ordering please specify porcelain base colour. eg 1920F30 with white porcelain base becomes 1920F30,WE. 58mm diameter.



*La bella rustica di  
Firenze Bronzo*

*(The rustic beauty of  
Florentine Bronze)*

Cat. No.	Volts/Amps	Description	Key
1920F30	250V 10A	Florentine Bronze Toggle Switch	F
1920F30MI	250V 10A	Florentine Bronze Intermediate Switch	F
1920F30MD	250V 10A	Florentine Bronze Double Pole Switch	F
1920F30MBPR	250V 10A	Florentine Bronze Bell Press with Spring Return Action	F
1920F31		Florentine Bronze Blank Unit. Suits Clipsal Standard Switch Modules.	H
1920F400	250V 400V.A	Florentine Bronze Incandescent Dimmer	I
1920F400LV	250V 400V.A	Florentine Bronze Low Voltage Dimmer	I
1920F400F	250V 400V.A	Fan Speed Controller with Florentine Bronze Cover	I

### Switches & Accessories with Ribbed Florentine Bronze Covers and Porcelain Bases

Available with White (WE) or Black (BK) porcelain bases. When ordering, please specify porcelain base colour. eg. 1920FR30 with white porcelain base becomes 1920FR30, WE. 58mm diameter.

Cat. No.	Volts/Amps	Description	Key
1920FR30	250V 10A	Florentine Bronze Toggle Switch	E
1920FR30MI	250V 10A	Florentine Bronze Intermediate Switch	E
1920FR30MD	250V 10A	Florentine Bronze Double Pole Switch	E
1920FR30MBPR	250V 10A	Florentine Bronze Bell Press with Spring Return Action	E
1920FR400	250V 400V.A	Florentine Bronze Incandescent Dimmer	L
1920FR400LV	250V 400V.A	Florentine Bronze Low Voltage Dimmer	L
1920FR400F	250V 400V.A	Fan Speed Controller with Florentine Bronze Cover	L



*La bella rustica di  
Firenze Bronzo  
(The rustic beauty of  
Florentine Bronze)*







### Switches & Accessories with Smooth Florentine Bronze Covers (Shallow Type)

Available with White (WE) or Black (BK) porcelain bases. When ordering, please specify porcelain base colour. eg. 1920S30FB with white porcelain base becomes 1920S30FB,WE. 53mm diameter.

Cat. No.	Volts/Amps	Description	Key
1920S30,FB	250V 10A	Florentine Bronze Switch	D
1920S30MI,FB	250V 10A	Florentine Bronze Intermediate Switch	D
1920S30MD,FB	250V 10A	Florentine Bronze Double Pole Switch	D
1920S30MBPR,FB	250V 10A	Florentine Bronze Bell Press with Spring Return Action	D
1920S400,FB	250V 400V.A	Florentine Bronze Incandescent Dimmer	not shown
1920S400LV,FB	250V 400V.A	Florentine Bronze Low Voltage Dimmer	not shown
1920S400F,FB	250V 400V.A	Fan Speed Controller with Florentine Bronze Cover	not shown
1920STV75,FB		Florentine Bronze TV Socket (including mechanism)	G

### Switches & Accessories with Ribbed Florentine Bronze Covers (Shallow Type) 53mm diameter.

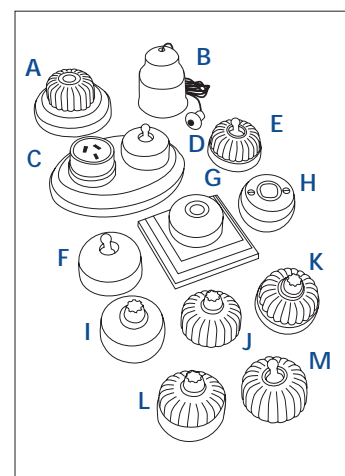
Cat. No.	Volts/Amps	Description	Key
1920SR30,FB	250V 10A	Florentine Bronze Switch	M
1920SR30MI,FB	250V 10A	Florentine Bronze Intermediate Switch	M
1920SR30MD,FB	250V 10A	Florentine Bronze Double Pole Switch	M
1920SR30MBPR,FB	250V 10A	Florentine Bronze Bell Press with Spring Return Action	M
1920SR400,FB	250V 400V.A	Florentine Bronze Incandescent Dimmer	J
1920SR400LV,FB	250V 400V.A	Florentine Bronze Low Voltage Dimmer	J
1920SR400F,FB	250V 400V.A	Fan Speed Controller with Florentine Bronze Cover	J
1920SRTV75,FB		Florentine Bronze TV Socket (including mechanism)	A

### 3 Pin Sockets with Florentine Bronze Covers 53mm diameter.

Cat. No.	Volts/Amps	Description	Key
1920F412,BR	250V 10A	Brown 3 Pin Socket	C
1920F412,WE	250V 10A	White 3 Pin Socket	not shown

### Ceiling Switch with Florentine Bronze Cover 54mm diameter.

Cat. No.	Volts/Amps	Description	Key
1920/343,FB	250V 10A	Two Way Florentine Bronze Ceiling Switch with 1.8m Brown Pull Cord	B









## Chrome Heritage

Until now, finding a suitable range of switches, sockets and accessories to suit the art deco era has been almost impossible. With Clipsal Heritage in Chrome, you can go retro and coordinate your switches, power outlets and accessories with your art deco furnishings.

### Switches & Accessories with Smooth Chrome Covers & Porcelain Bases

Available with White (WE) or Black (BK) porcelain bases. When ordering, please specify porcelain base colour. eg 1920C30 with white porcelain base becomes 1920C30,WE. 58mm diameter.

Cat. No.	Volts/Amps	Description	Key
1920C30	250V 10A	Chrome Toggle Switch	E
1920C30MI	250V 10A	Chrome Intermediate Switch	E
1920C30MD	250V 10A	Chrome Double Pole Switch	E
1920C30MBPR	250V 10A	Chrome Bell Press with Spring Return Action	E
1920C31		Chrome Blank Unit. Suits Clipsal Standard Switch Module.	H
1920C400	250V 400V.A	Chrome Incandescent Dimmer	K
1920C400LV	250V 400V.A	Chrome Low Voltage Dimmer	K
1920C400F	250V 400V.A	Fan Speed Controller with Chrome Cover	K



*Go retro! Recreate the art deco look with classic Chrome*

### Switches & Accessories with Ribbed Chrome Covers and Porcelain Bases

Available with White (WE) or Black (BK) porcelain bases. When ordering, please specify porcelain base colour. eg 1920CR30 with white porcelain base becomes 1920CR30,WE. 58mm diameter.

Cat. No.	Volts/Amps	Description	Key
1920CR30	250V 10A	Chrome Toggle Switch	L
1920CR30MI	250V 10A	Chrome Intermediate Switch	L
1920CR30MD	250V 10A	Chrome Double Pole Switch	L
1920CR30MBPR	250V 10A	Chrome Bell Press with Spring Return Action	L
1920CR400	250V 400V.A	Chrome Incandescent Dimmer	I
1920CR400LV	250V 400V.A	Chrome Low Voltage Dimmer	I
1920CR400F	250V 400V.A	Fan Speed Controller with Chrome Cover	I



*Go retro!*

*Recreate the art deco look  
with classic Chrome*







### Switches & Accessories with Smooth Chrome Covers (Shallow Type) 53mm diameter.

Cat. No.	Volts/Amps	Description	Key
1920S30,CH	250V 10A	Chrome Toggle Switch	D
1920S30MI,CH	250V 10A	Chrome Intermediate Switch	D
1920S30MD,CH	250V 10A	Chrome Double Pole Switch	D
1920S30MBPR,CH	250V 10A	Chrome Bell Press with Spring Return Action	D
1920S400,CH	250V 400V.A	Chrome Incandescent Dimmer	F
1920S400LV,CH	250V 400V.A	Chrome Low Voltage Dimmer	F
1920S400F,CH	250V 400V.A	Fan Speed Controller with Chrome Cover	F
1920STV75,CH		Chrome TV Socket (including mechanism)	G

### Switches & Accessories with Ribbed Chrome Covers (Shallow Type) 53mm diameter.

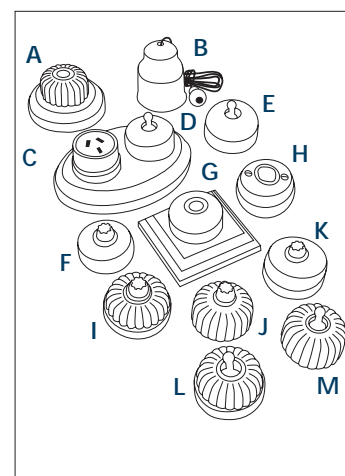
Cat. No.	Volts/Amps	Description	Key
1920SR30,CH	250V 10A	Chrome Toggle Switch	M
1920SR30MI,CH	250V 10A	Chrome Intermediate Switch	M
1920SR30MD,CH	250V 10A	Chrome Double Pole Switch	M
1920SR30MBPR,CH	250V 10A	Chrome Bell Press with Spring Return Action	M
1920SR400,CH	250V 10A	Chrome Incandescent Dimmer	J
1920SR400LV,CH	250V 400V.A	Chrome Low Voltage Dimmer	J
1920SR400F,CH	250V 400V.A	Fan Speed Controller with Chrome Cover	J
1920SRTV75,CH		Chrome TV Socket (including mechanism)	A

### 3 Pin Sockets with Chrome Covers 53mm diameter.

Cat. No.	Volts/Amps	Description	Key
1920C412,BK	250V 10A	Black 3 Pin Socket	not shown
1920C412,WE	250V 10A	White 3 Pin Socket	C

### Ceiling Switch with Chrome Cover 54mm diameter.

Cat. No.	Volts/Amps	Description	Key
1920/343,CH	250V 10A	Two Way Chrome Ceiling Switch with 1.8m White Pull Cord	B









# Timber Heritage

**H**eritage Mounting Blocks will add that final touch of style to your Heritage Switches, Sockets and Accessories.

Choose the look you want from Natural Pine, Cedar Finish, and Undercoated, which can be painted to match other woodwork in your home.

Mounting Blocks are available for one to four accessories and in round, square, rectangular and oval shapes, depending on the application.

For convenient, easy installation, they are supplied pre-drilled for mounting of equipment, and for mounting onto brackets and wall boxes. Fixing screws for this purpose are supplied (except for Catalogue Numbers 1920MBR and 1920MB1).

Mounting Blocks without holes are also available.

## Timber Mounting Blocks

To order Mounting Blocks without pre-drilled holes, simply add NH after Catalogue Number e.g. 1920 MBR Mounting Block with no holes in Cedar finish becomes 1920MBR-NH,CD.



*The texture of timber provides the perfect finish*

### Natural Pine

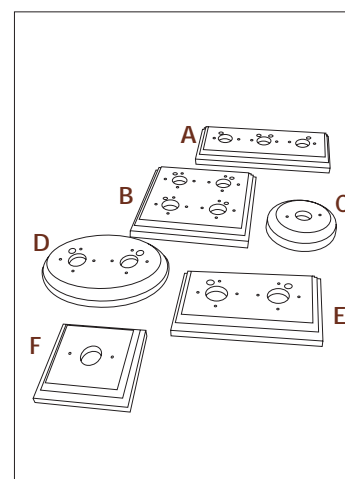
Cat. No.	Description	Dimensions	Key
1920MB,PN	Suits 84mm centred switches & sockets	150 x 107mm	not shown
1920MBR,PN	1 Gang Round Mounting Block	88mm Diameter	C
1920MB1,PN	1 Gang Square Mounting Block	90mm x 90mm	F
1920MB2,PN	2 Gang Rectangular Mounting Block	90mm x 155mm	E
1920MB2L,PN	2 Gang Rectangular Mounting Block (to suit dimmer)	90mm x 155mm	not shown
1920MB2OV,PN	2 Gang Oval Mounting Block	110mm x 156mm	D
1920MB3,PN	3 Gang Rectangular Mounting Block	90mm x 225mm	A
1920MB4,PN	4 Gang Rectangular Mounting Block	90mm x 280mm	not shown
1920MB4/2,PN	4 Gang Square Mounting Block	155mm x 155mm	B

### Cedar Finish

Cat. No.	Description	Dimensions	Key
1920MB,CD	Suits 84mm centred switches & sockets	150 x 107mm	not shown
1920MBR,CD	1 Gang Round Mounting Block	88mm Diameter	C
1920MB1,CD	1 Gang Square Mounting Block	90mm x 90mm	F
1920MB2,CD	2 Gang Rectangular Mounting Block	90mm x 155mm	E
1920MB2L,CD	2 Gang Rectangular Mounting Block (to suit dimmer)	90mm x 155mm	not shown
1920MB2OV,CD	2 Gang Oval Mounting Block	110mm x 156mm	D
1920MB3,CD	3 Gang Rectangular Mounting Block	90mm x 225mm	A
1920MB4,CD	4 Gang Rectangular Mounting Block	90mm x 280mm	not shown
1920MB4/2,CD	4 Gang Square Mounting Block	155mm x 155mm	B

### Undercoated

Cat. No.	Description	Dimensions	Key
1920MB,UC	Suits 84mm centred switches & sockets	150 x 107mm	not shown
1920MBR,UC	1 Gang Round Mounting Block	88mm Diameter	C
1920MB1,UC	1 Gang Square Mounting Block	90mm x 90mm	F
1920MB2,UC	2 Gang Rectangular Mounting Block	90mm x 155mm	E
1920MB2L,UC	2 Gang Rectangular Mounting Block (to suit dimmer)	90mm x 155mm	not shown
1920MB2OV,UC	2 Gang Oval Mounting Block	110mm x 156mm	D
1920MB3,UC	3 Gang Rectangular Mounting Block	90mm x 225mm	A
1920MB4,UC	4 Gang Rectangular Mounting Block	90mm x 280mm	not shown



---

**Products of Gerard Industries Pty Ltd**

ABN 27 007 873 529

**Head Office**

12 Park Terrace, Bowden  
South Australia 5007  
Telephone (08) 8269 0511  
Facsimile (08) 8340 1724  
Internet [www.clipsal.com](http://www.clipsal.com)  
E-Mail [plugin@clipsal.com.au](mailto:plugin@clipsal.com.au)

**Offices in all States**

<b>NSW</b>	Sydney	(02) 9794 9200
	Albury	(02) 6041 2377
<b>VIC</b>	Melbourne	(03) 9207 3200
	Country areas	1800 653 893
<b>QLD</b>	Brisbane	(07) 3244 7444
	Townsville	(07) 4729 3333
<b>SA</b>	Adelaide	(08) 8268 0400
<b>WA</b>	Perth	(08) 9442 4444

<b>TAS</b>	Launceston	(03) 6343 5900
<b>NT</b>	Darwin	(08) 8947 0278

**International Enquiries**

Head Office Export Department  
Telephone +61 8 8269 0587  
Facsimile +61 8 8340 7350  
E-Mail [export@clipsal.com.au](mailto:export@clipsal.com.au)

**New Zealand**

**Clipsal Industries (NZ) Ltd (Auckland)**

Telephone: (09) 576 3403  
Facsimile: (09) 576 1015  
E-Mail [headoffice@clipsal.co.nz](mailto:headoffice@clipsal.co.nz)

**Customer Service**

Free Fax (0508) 250 305  
Auckland/Mobile Phone (09) 572 0014  
Free Phone (0508) CLIPSAL

**You can find this brochure and  
many others online in PDF format at**  
[clipsal.com](http://clipsal.com)

**Follow the links off the home page  
or access the following page  
directly:**

[clipsal.com/wat\\_lib\\_pdf.cfm](http://clipsal.com/wat_lib_pdf.cfm)

[clipsal.com](http://clipsal.com)

© Copyright Gerard Industries Pty Ltd  
Printed by Custom Press Pty Ltd (08) 8346 7999  
O/N 828-327 Nov 02/04